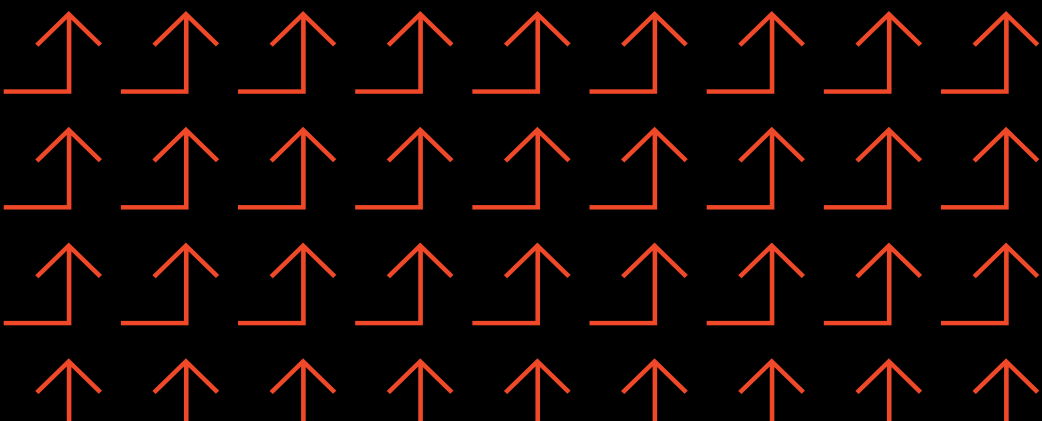


T-LEVELS
THE NEXT LEVEL QUALIFICATION

CCG

Chichester
College
Group

EMPLOYERS GUIDE FOR
EMPLOYERS GUIDE FOR EMPLOYERS
GUIDE FOR EMPLOYERS



*WELCOME TO
THE NEXT LEVEL*

**WELCOME TO
THE NEXT LEVEL**

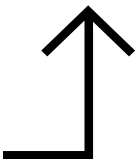
WHAT ARE T LEVELS?

T Levels are a new national qualification that the government made available across England in September 2020.

Chichester College Group was chosen to be one of the first providers in the country to deliver T Levels.

The 'T' in T Levels stands for Technical, the idea behind these qualifications is that they will introduce a new system of technical education, equivalent to 3 A-levels, for students aged 16-19. In order to support entry into skilled employment, T Levels will combine 80% classroom theory and practical learning with 20% industry placement.

At the heart of each T Level is an industry placement, which is a minimum of 315 hours. This will give you early access to the brightest talent entering your industry. The industry placements are designed to be flexible, they could be block weeks or regular days per week, depending on the needs of your business and curriculum learning plan.



T-LEVELS

THE NEXT LEVEL QUALIFICATION

SHAPING YOUR FUTURE WORKFORCE

SHAPING YOUR FUTURE WORKFORCE



Employers have identified that many young people applying for positions lack essential employability skills. T Levels aims to bridge that gap.

The 2-year T Level courses have been developed in collaboration with employers and businesses so that the content will meet the needs of industry and prepare learners for the real world of work. Students will work towards course specific learning objectives, in order to develop their technical abilities.

During their industry placements there is an emphasis on developing essential skills to mould the future workforce. These include:

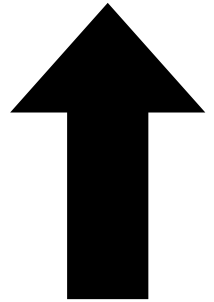
- ↗ **Being a team player**
- ↗ **Having a proactive approach**
- ↗ **Being responsible**
- ↗ **Having professional etiquette**
- ↗ **Being an effective communicator**

**FIND OUT MORE AT:
[CHIGROUP.AC.UK/T-LEVELS](https://chigroup.ac.uk/t-levels)**

HOW CAN INDUSTRY PLACEMENTS BENEFIT YOUR BUSINESS?

There are a number of associated direct and indirect benefits for employers by integrating T Level industry placements into their corporate strategy.

- ↑ Industry placements are an ideal solution for entry-level skills shortages.
- ↑ Your partnership with the college connects you to a pipeline of talented young people and develops your own network of potential employees.
- ↑ By influencing the learning pathway for young people entering your industry, you will upskill your potential future workforce with the employability skills you will need from them in the years to come.
- ↑ Young people can be an invaluable source of new and interesting ideas that can change the way you think about doing business.
- ↑ An industry placement student could help support delivery of key projects.
- ↑ Develop the leadership skills of your staff by providing opportunities for them to supervise an industry placement student.
- ↑ A commitment to industry placements allows you to raise your organisation's profile, especially as the T Levels gain more public exposure with your customers.



FREQUENTLY ASKED QUESTIONS

FREQUENTLY ASKED QUESTIONS

HOW ARE INDUSTRY PLACEMENTS DIFFERENT TO WORK EXPERIENCE?

Industry placements will be for a minimum of 315 hours, with students studying a related course. Therefore, students will have relevant skills and knowledge that enable them to add value to your business over their placement.

Work experience typically involves a student shadowing you for 1 or 2 weeks, having not necessarily studied a course relevant to your industry. They are mostly there to observe and experience a first taster for the world of work.

HOW CAN I BALANCE THIS WITH CORE BUSINESS ACTIVITIES?

Students will undergo preparation before beginning their industry placement. In addition to the technical knowledge they gain from their course, they will develop employability skills.

Goals and responsibilities will be agreed in the industry placement agreement, signed by yourself, the student and the Industry Placement Officer, prior to the placement starting.

FAQS CONTINUED



FREQUENTLY ASKED QUESTIONS

FREQUENTLY ASKED QUESTIONS

HOW CAN I MAKE SURE I GET SUITABLE STUDENTS?

You can work with the college to find the best student for your organisation. Be transparent about your requirements. If you would like, this can involve you holding a CV screening and/or interview process. Note that all students will be studying a technical course that should be relevant to the industry placement being offered.

DO I NEED TO PAY THE STUDENT?

There is no legal requirement or expectation that T Level students will be paid. However, you can pay the student should you wish to, or support the student with their travel and subsistence costs.

WILL THERE BE LOTS OF PAPERWORK?

No. All legal, health and safety, insurance and other documents will be given as templates, pre-filled where possible, to minimise your workload and the amount of paperwork required.

WHAT SUPPORT WILL I RECEIVE?

An Industry Placement Officer will support you to set up the placement, from dealing with administration to helping you find the right student. Once a placement begins, they will continue to provide support to both the student and supervisor, where necessary, and will seek to learn and improve the process over the course of the placement.

USEFUL LINKS



USEFUL LINKS



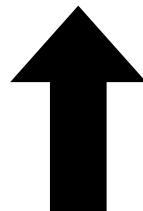
↑ **Meet the future workforce:**
www.tlevels.gov.uk/employers



↑ **Further information about
industry placements:**
www.gov.uk/guidance/industry-placements



↑ **What's next for T levels?**
www.tlevels.gov.uk/students/subjects





T-LEVELS

THE NEXT LEVEL QUALIFICATION

**FIND OUT MORE AT:
CHIGROUP.AC.UK/T-LEVELS**



HM Government

CCG

Chichester
College
Group